



Filter for Anechoic Chambers

250Vac (440Vac) , 50/60Hz, 16A-250A

Type: RPF282C-16/32/63/100/150

RPF482C-16/32/63/100/150

RPF182C-200/250

Jiangsu REMC Electronic Technology Co., Ltd.
No.29, Chuangzhi Industrial Park, Liyang, Jiangsu, China

TLE: +86 519 87289188 FAX: +86 51987693666
E-mail: sales@remc-filter.com emcfilter@163.com

250Vac (440Vac) , 50/60Hz, 16A-250A

For Anechoic Chambers/Shielding Rooms

Restrain the conductive and radiation

Insertion loss to CISPR 17



Features :

The electronic components are installed in the sealed stainless steel housing

The cables enter through glands or Conduit Screw

Independent line composed of single chokes

The insertion loss values are not reduced with artificial mains networks (AMN) or other equipment with high leakage currents

Discharge Resistors:

For enhanced safety, all power line filters are fitted with internal discharge resistor, these are intended to discharge the capacitors to a safe voltage within 3 minutes of removing power from the filter

Installation:

The installation process does not require welding. It is only installed with Conduit Screws and fixing screws

The surface around the fixing holes is left as bare metal (unpainted) to ensure EMI gasket contact with metal surfaces (chassis, ground)

Scope of supply:

The filter provides complete mounting accessories (including fixing screws, Conduit Screw, nuts, flat gasket, EMI gaskets, Cable Gland).

Technical Data

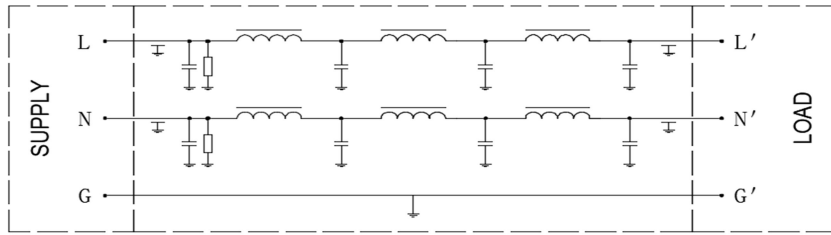
Rated voltage 2-line filters	V_R	250VAC/500VDC	Line/line Line/case
Rated voltage 4-line filters	V_R	440VAC 250VAC	Line/line Line/case
Rated frequency	f_R	0-60Hz	
Rate current	I_R	See characteristics	Referred to +40 °C ambient temperature
Test Voltage	V_{test}	1200 VDC, 2 s 1200 VDC, 2 s	Line/line Line/case
Permissible ambient temperature	T_A	-25°C~40°C	
Leakage Current	I_{Leak}	See characteristics	at 380V/220V and 50Hz
Reactive Current	$I_{reactive}$	See characteristics	at 380V/220V and 50Hz
Climatic category		25/085/56	

Product Range

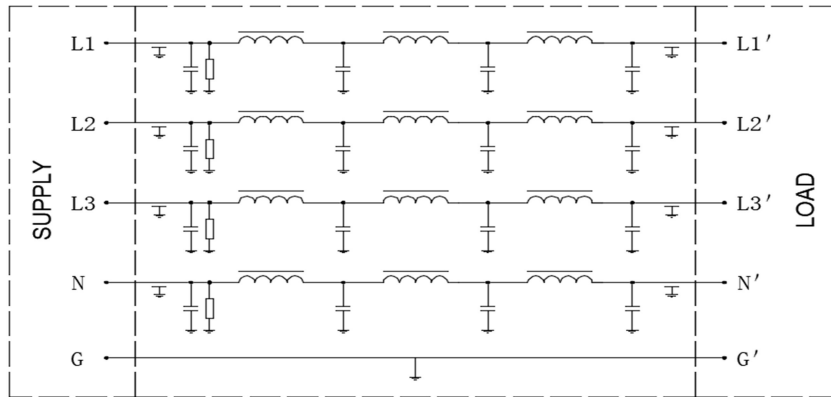
Type	I_R (A)	$I_{Leakage}$ (A)	$I_{Reactive}$ (A)	Terminal connection		Insertion loss
				In put	Out put	
RPF282C-16	2×16	3.5	3.5	M6	M6	100dB, 14k~40GHz
RPF282C-32	2×32	5	5	M6	M6	
RPF282C-63	2×63	5	5	M6	M6	
RPF282C-100	2×100	9	9	M12	M12	
RPF282C-150	2×150	9	9	M12	M12	
RPF482C-16	4×16	0.7	3.5	M6	M6	
RPF482C-32	4×32	0.9	5	M6	M6	
RPF482C-63	4×63	0.9	5	M6	M6	
RPF482C-100	4×100	1.7	9	M12	M12	
RPF482C-150	4×150	1.7	9	M12	M12	
RPF182C-200	1×200	9	9	M12	M12	
RPF182C-250	1×250	17	17	M12	M12	

250Vac (440Vac) , 50/60Hz, 16A-250A

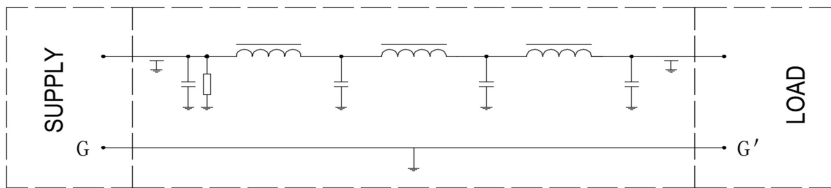
Typical circuit diagrams



2-line filters



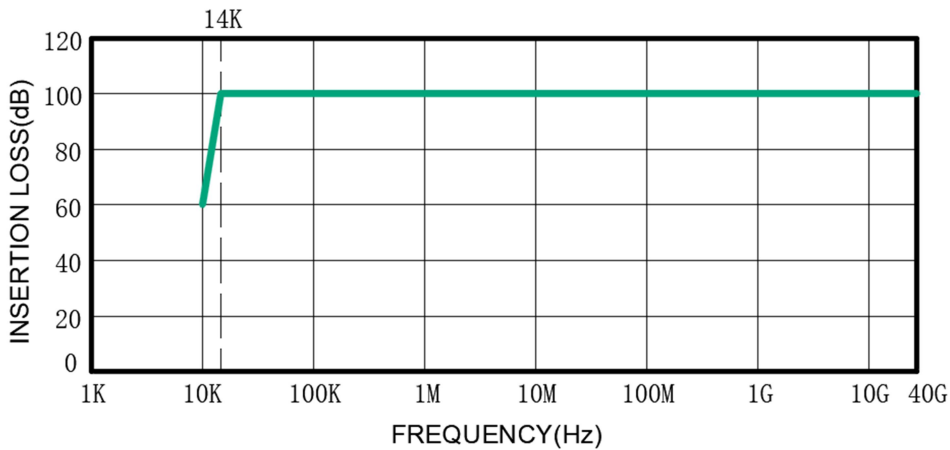
4-line filters



1-line filters

Attenuation diagram (100 dB@14kHz-40G Hz)

Insertion Loss per Cisp17
typical values at Z=50Ω



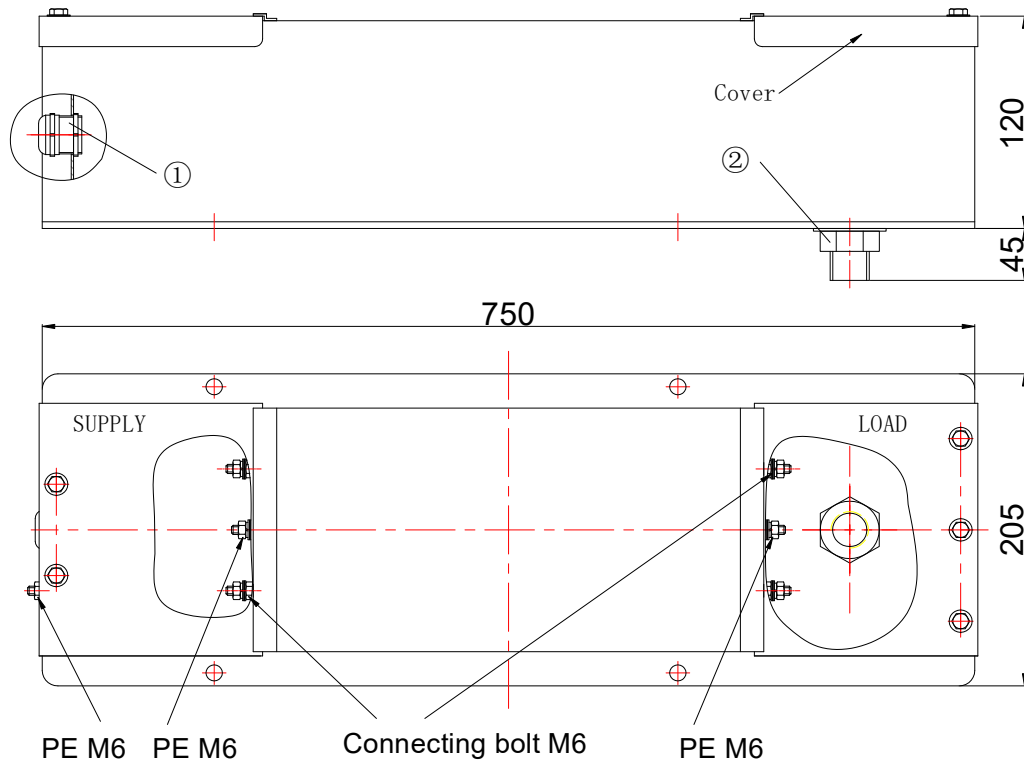
250Vac (440Vac), 50/60Hz, 16A-250A

Dimensional drawing 1

2 x 16A

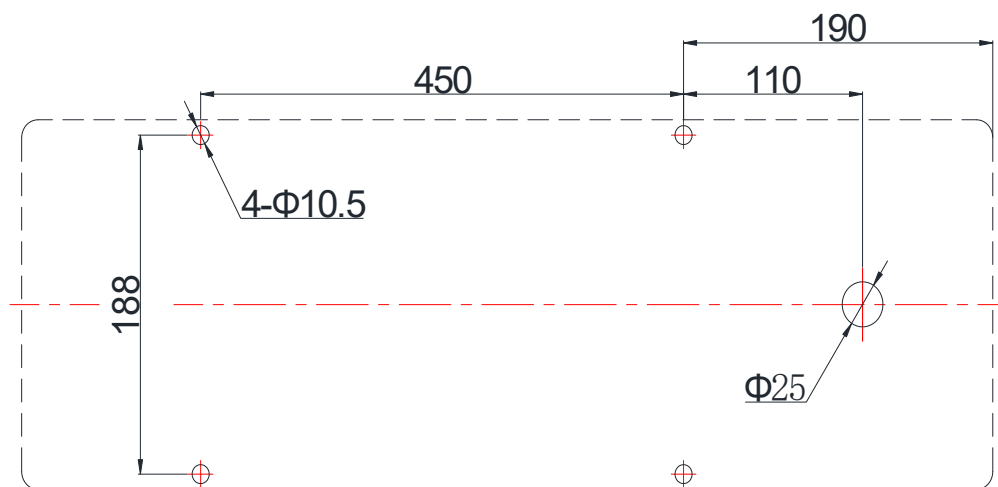
2 x 32A

RPF282C-16、RPF282C-32



- ① Cable Gland M25 (ϕ 10~16)
- ② Conduit Screw M24 (ϕ 15)

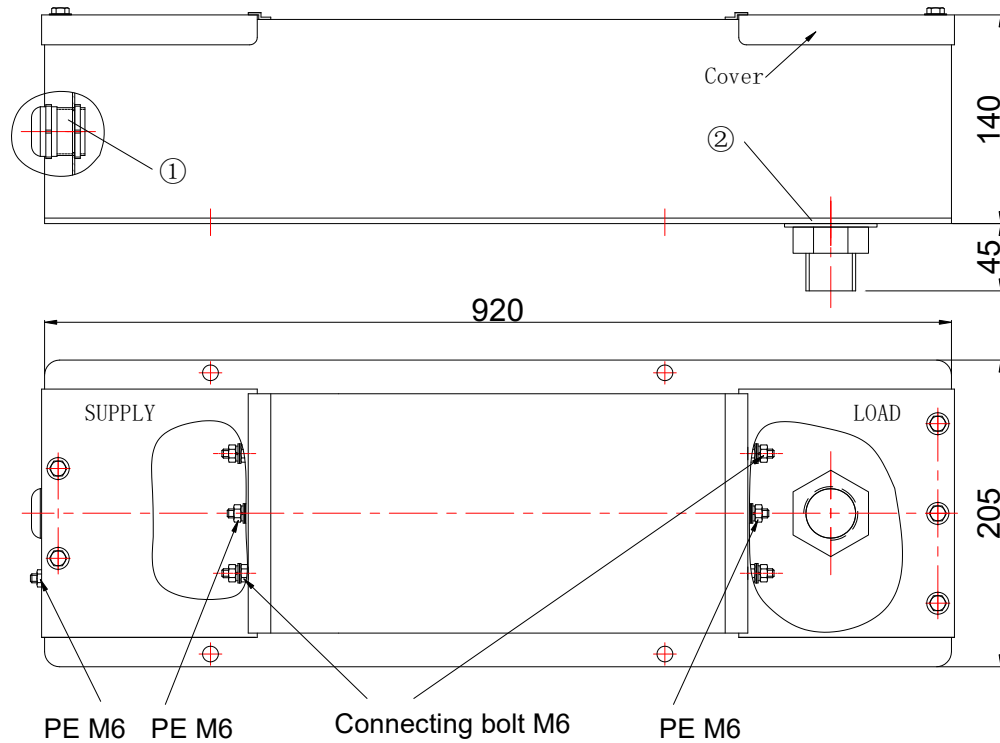
Fixing dimensions



Dimensional drawing 2

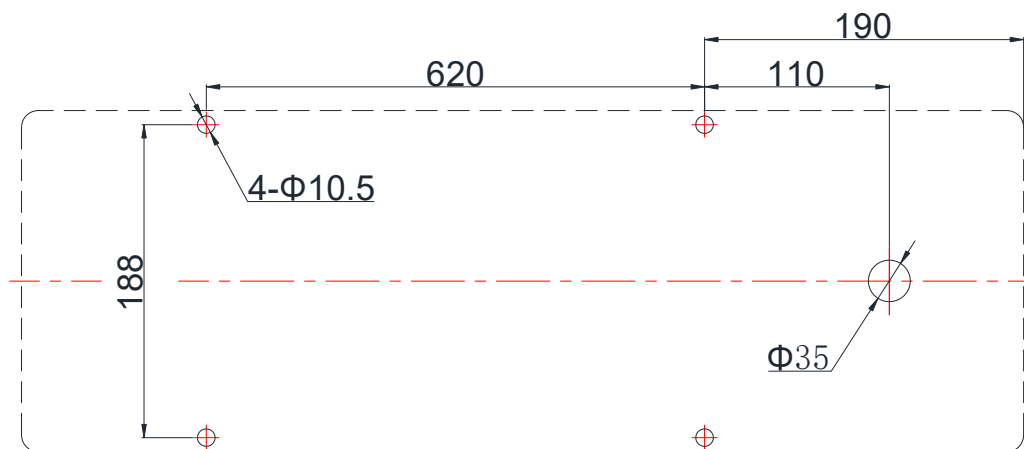
2 x63A

RPF282C-63



- ① Cable Gland M32 (ϕ 18~25)
- ② Conduit Screw M33 (ϕ 24)

Fixing dimensions



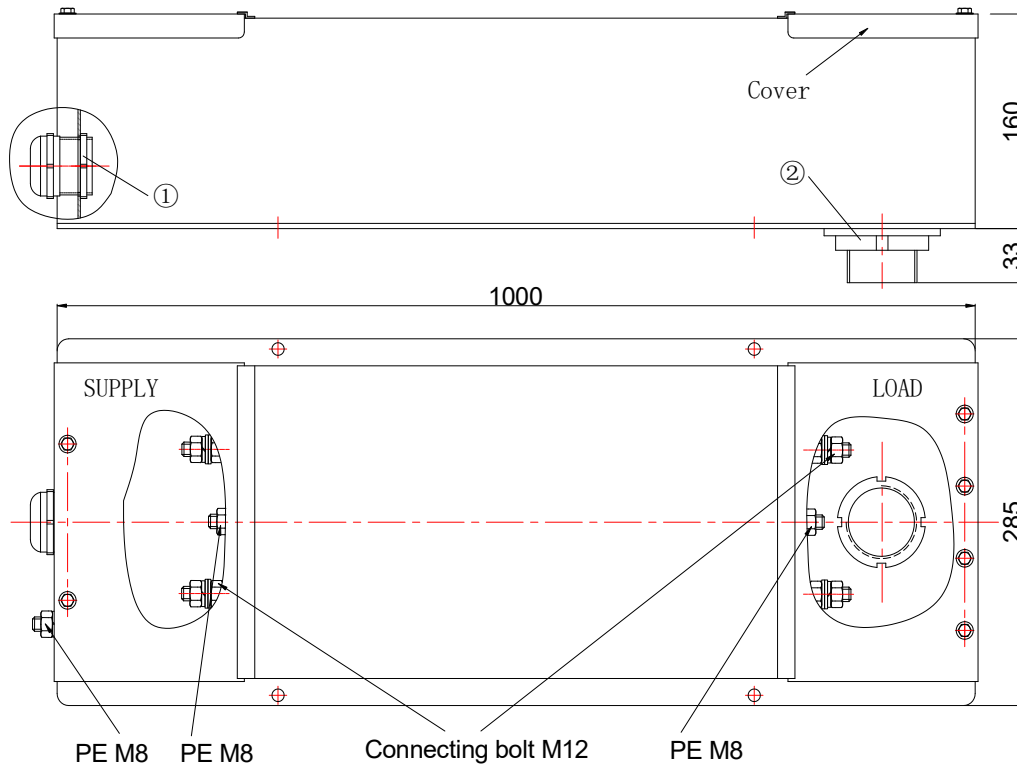
250Vac (440Vac), 50/60Hz, 16A-250A

Dimensional drawing 3

2 x 100A

2 x 150A

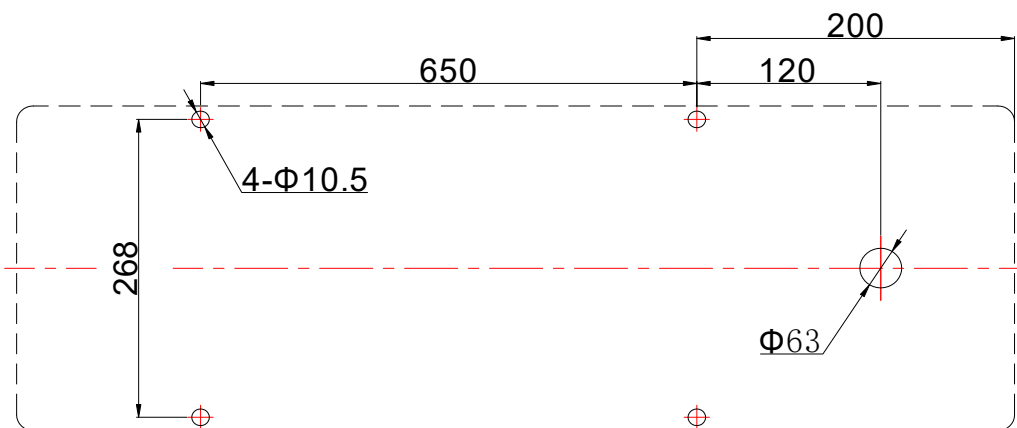
RPF282C-100、RPF282C-150



① Cable Gland M63 (ϕ 44~51)

② Conduit Screw M60 (ϕ 50)

Fixing dimensions



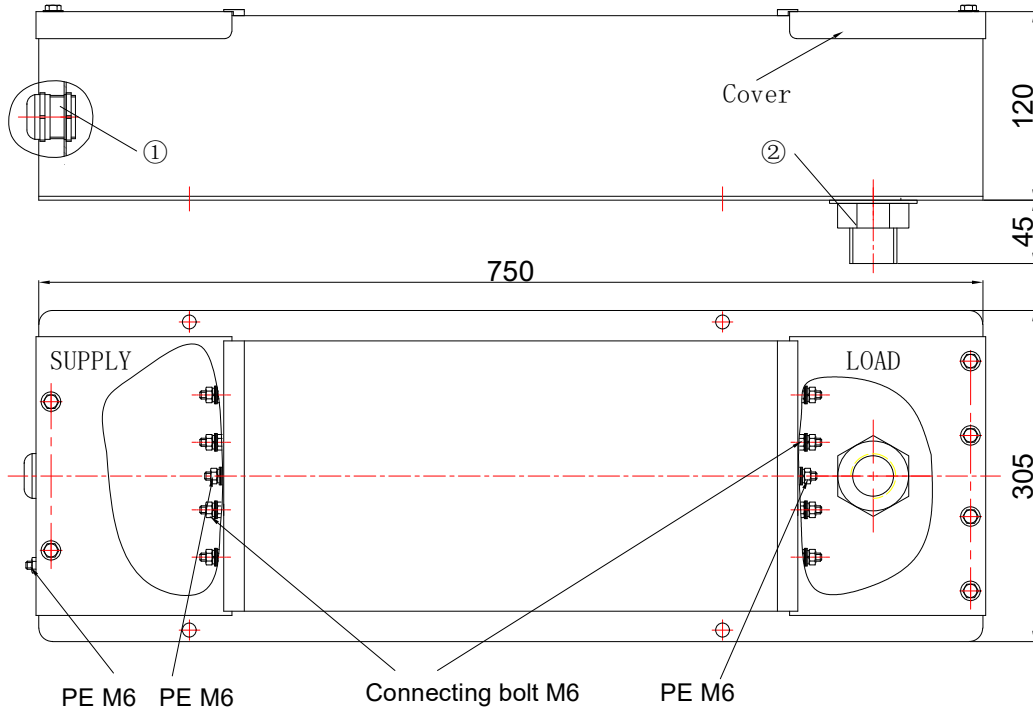
250Vac (440Vac) , 50/60Hz, 16A-250A

Dimensional drawing 4

4 x 16A

4 x 32A

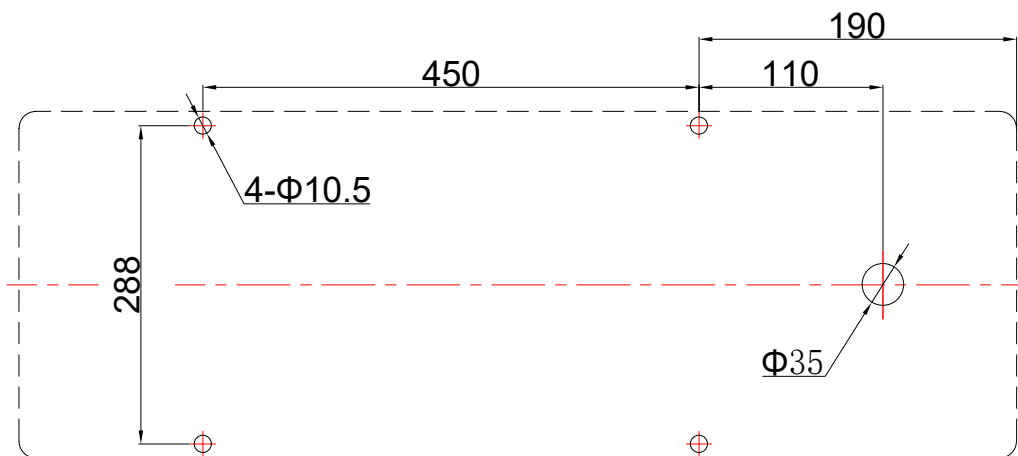
RPF482C-16、RPF482C-32



① Cable Gland M32 (ϕ 18~25)

② Conduit Screw M33 (ϕ 24)

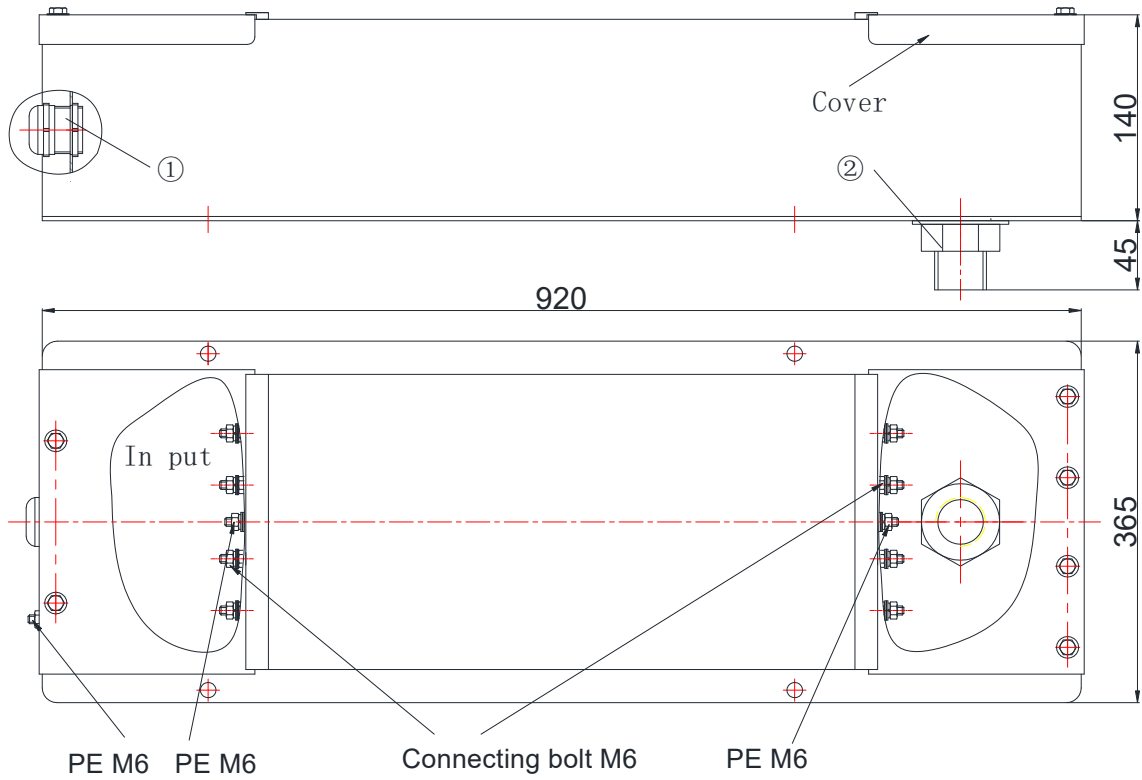
Fixing dimensions



Dimensional drawing 5

4x 63A

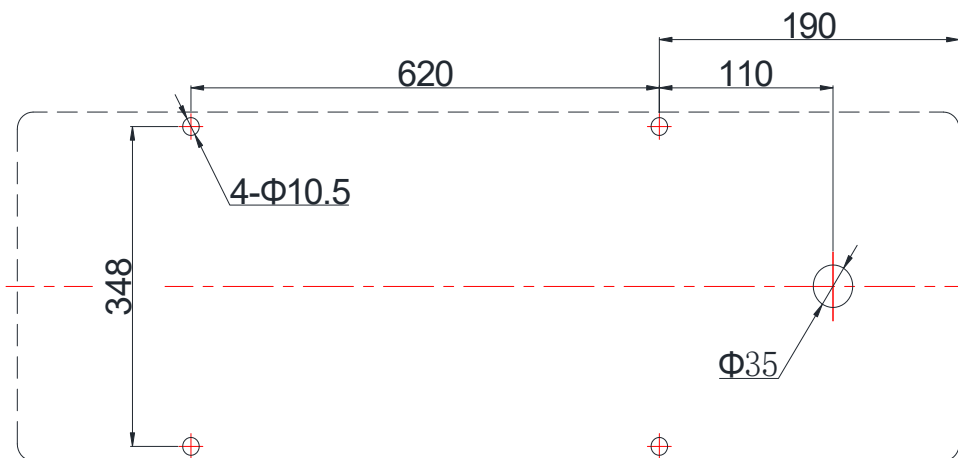
RPF482C-63



① Cable Gland M32 (ϕ 18~25)

② Conduit Screw M33 (ϕ 24)

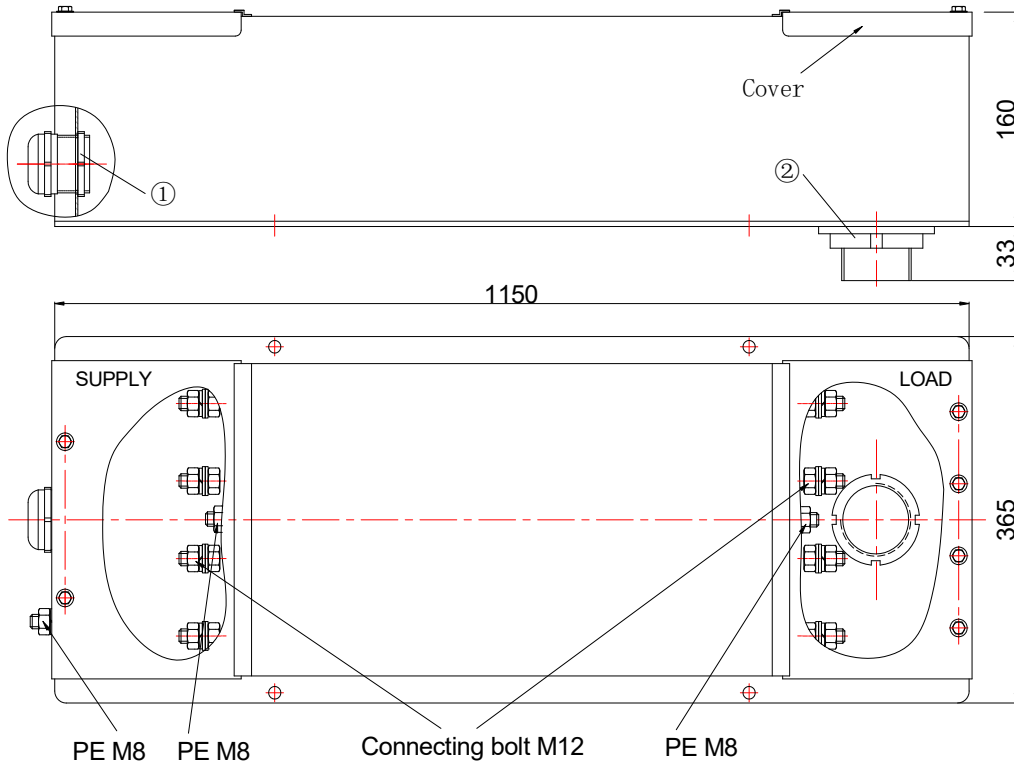
Fixing dimensions



Dimensional drawing 6

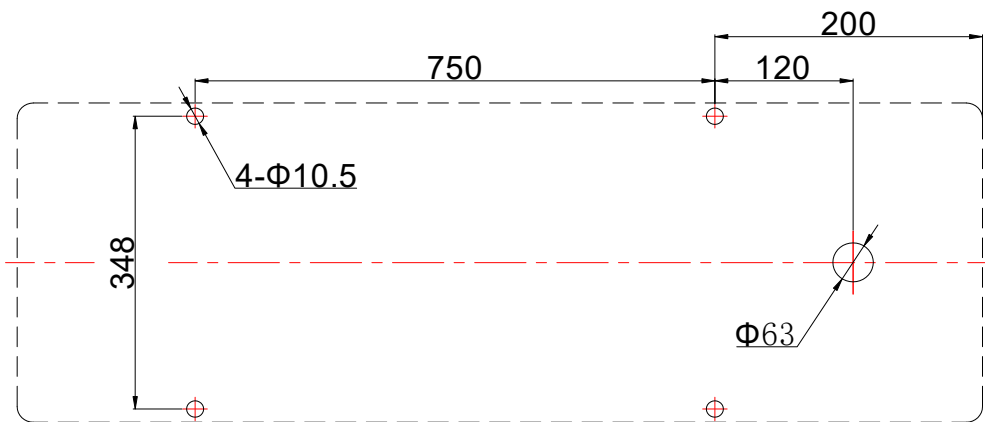
4x 100A

RPF482C-100



- ① Cable Gland M63 (ϕ 44~51)
- ② Conduit Screw M60 (ϕ 50)

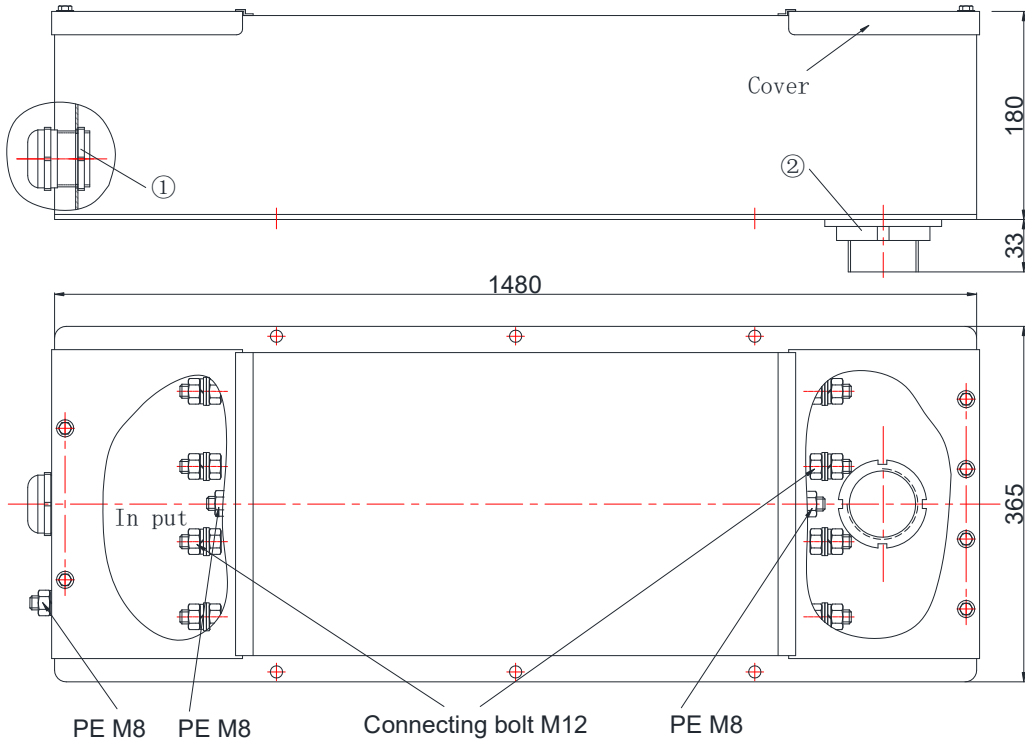
Fixing dimensions



Dimensional drawing 7

4x 150A

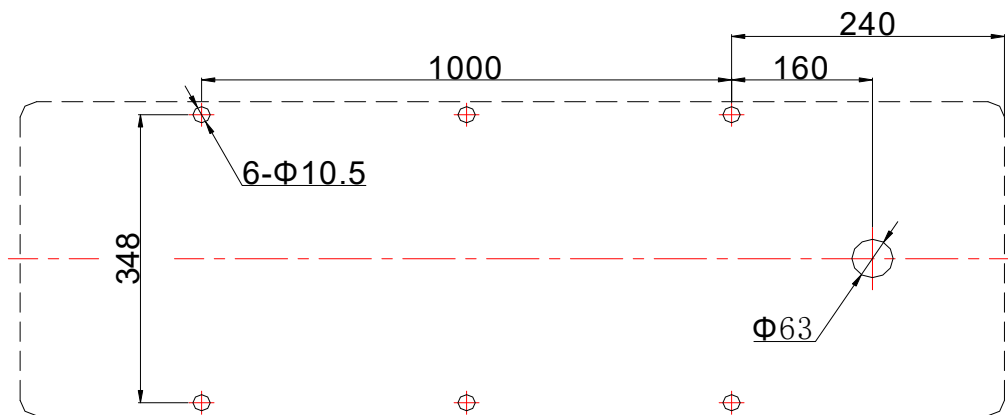
RPF482C-150



① Cable Gland M63 (ϕ 44~51)

② Conduit Screw M60 (ϕ 50)

Fixing dimensions



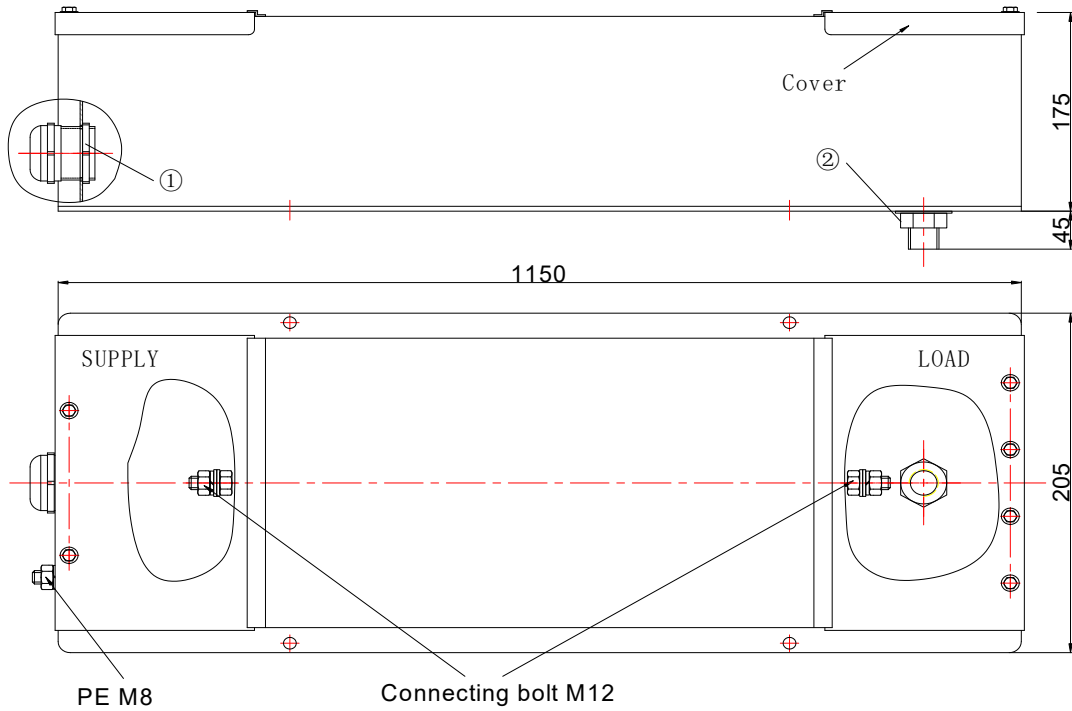
250Vac (440Vac) , 50/60Hz, 16A-250A

Dimensional drawing 8

1 x 200A

1 x 250A

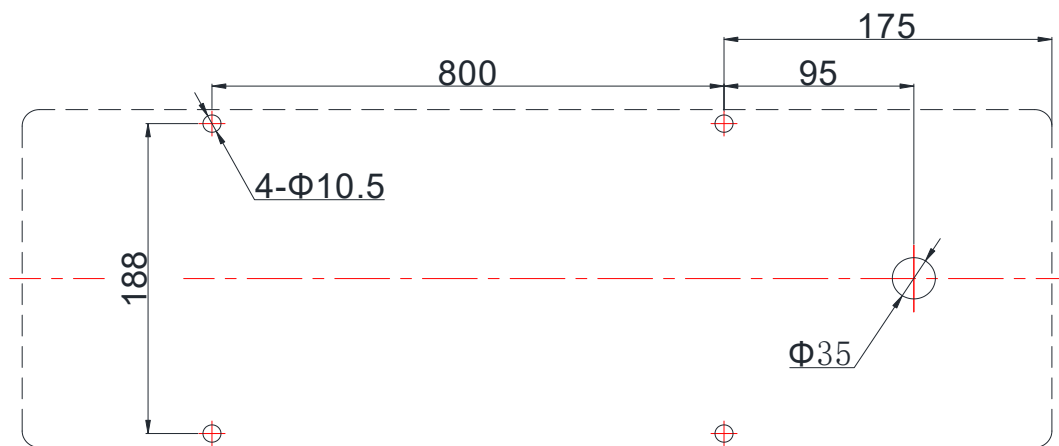
RPF182C-200、RPF182C-250



① Cable Gland M32 (ϕ 18~25)

② Conduit Screw M33 (ϕ 24)

Fixing dimensions



Please read all safety and warning notes carefully before installing the filter and putting it into operation. The same applies to the warning signs on the filter. Please ensure that the signs are not removed nor their legibility impaired by external influences.

Death, serious bodily injury and substantial material damage to equipment may occur if the appropriate safety measures are not carried out or the warnings in the text are not observed.

Warning

- It shall be ensured that only qualified persons are engaged on work such as installation, operation, repair and maintenance.
- Using according to the technical data (Rated voltage, Rated frequency, Rate current and the place of application)
- The protective earth connections shall be the first to be made when the filter is installed.
- Filters contain components that store an electric charge. After removing wait 3 minutes then short out all terminals before touching.
- Disconnect the mains supply before removing the cover of the filter.
- Because the product can become very hot during operation. So do not touch the case! Allow to cool before servicing.